



Dorset
Council

Habitats Regulations Assessment

Bere Regis Neighbourhood Plan Review

June 2026

Contents

1	Introduction	3
2	Legislative background to Habitats Regulations Assessment	4
3	The Habitats Regulations Assessment Process	6
3.1.	Task 1: HRA Screening.....	6
3.2.	Task 2: Appropriate Assessment.....	6
3.3.	Task 3: Mitigation.....	6
4	The Bere Regis Neighbourhood Plan Review	8
5	Habitats Regulations Assessment: Screening	10
5.1.	Water Pollution.....	15
	Dorset Heathlands Ramsar	15
	POOLE HARBOUR SPA and RAMSAR	15
	HOLNEST SAC	17
5.2.	Air Pollution	17
5.3.	Public access, disturbance and other human intrusion.....	18
	Dorset Heathlands SPA	18
5.4.	Sport, leisure and recreational activities	19
	Dorset Heaths SAC	19
	ST Alban’s Head to DURLSTON HEAD SAC and Isle of Portland to studland cliffs sac	21
	CERNE AND SYDLING DOWNS SAC.....	21
	Rooksmoor SAC.....	21
	Fontmell & Melbury Downs SAC.....	21
5.5.	Habitat Fragmentation.....	22
	Dorset Heaths SAC	22
6	Appropriate Assessment.....	24
6.1.	Recreational Pressure	24
6.2.	Water Pollution.....	24
7	Conclusion.....	26
	Appendix A: Details of European Sites within 20km of the Bere Regis Neighbourhood Area	27

1 Introduction

- 1.0.1 This document provides a Habitats Regulations Assessment (HRA) of the Bere Regis Neighbourhood Plan Review.
- 1.0.2 The main purpose of the HRA process is to prevent a plan or project from adversely affecting the integrity of a European Site, which are areas of exceptional importance for rare, endangered or vulnerable natural habitats or species. Extensive areas of Dorset and surrounding areas are occupied by European sites, reflecting the importance of the region for wildlife and habitats.
- 1.0.3 The HRA process involves several distinct stages of assessment which must be undertaken in order to meet the requirements of the Conservation of Habitats and Species Regulations 2017. This is explained in more detail in Chapter 3.
- 1.0.4 The first of these stages is the HRA screening stage. The main purpose of the HRA screening is to assess whether a plan is likely to have a significant negative effect on a European Site, and hence whether the subsequent steps of the HRA process are required.
- 1.0.5 If the HRA screening concludes that there would be no likely significant effect on a European Site, then the plan may proceed without further assessment.
- 1.0.6 However, if it is found that the plan would have a likely significant effect on a European Site then further assessment is required through the subsequent stages of the HRA process, to ensure that the plan does not result in adverse effects upon the integrity of a European site.
- 1.0.7 The HRA screening report firstly explains the legal basis for HRA (Chapter 2) and explains the HRA process (Chapter 3), before setting out the scope of the Bere Regis Neighbourhood Plan Review (Chapter 4). Following this, consideration is given to whether the Bere Regis Neighbourhood Plan Review is likely to have a significant effect upon a European site in the HRA screening exercise (Chapter 5). Given it is concluded that the Plan Review is likely to have a significant effect on European Sites, an Appropriate Assessment has been carried out (Chapter 6). Following the assessment, there is a conclusion (Chapter 7). The conclusion provides a summary of the content of the HRA and concludes on whether the plan will have an adverse effect upon the integrity of a European Site.

2 Legislative background to Habitats Regulations Assessment

2.0.1 EU Directive (92/43/EEC) on the Conservation of Habitats and of Wild Fauna and Flora ('the Habitats Directive') led to the establishment of a network of 'European sites', collectively known as Natura 2000, which are areas of exceptional importance with respect to rare, endangered or vulnerable natural habitats or species. European Sites consist of the following ecological designations:

- Special Protection Areas (SPAs): Classified under the EU Directive (79/409/EEC) on the Conservation of Wild Birds ('the Birds Directive'), with the objective of protecting and managing areas which are important for rare and vulnerable birds as they are important grounds for breeding, feeding, wintering or migration; and
- Special Areas of Conservation (SACs): Classified under the Habitats Directive, these areas provide rare and vulnerable animals, plants and habitats with increased protection and management.

2.0.2 The National Planning Policy Framework (paragraph 194) states that the following sites should be afforded the same protection as European Sites:

- Potential Special Protection Areas (pSPA): sites on which the Government has initiated public consultation on the scientific case for designation as a Special Protection Area;
- Possible Special Areas of Conservation (pSAC): sites on which Government has initiated public consultation on the scientific case for designation as a candidate Special Area of Conservation;
- Ramsar sites (and listed/proposed Ramsar sites): Wetlands of international importance designated under the 1971 Ramsar Convention, and proposed Ramsar sites are sites on which Government has initiated public consultation on the scientific case for a Ramsar site; and
- Sites identified, or required, as compensatory measures for adverse effects on European sites and Ramsar sites: Sites which are included as compensation in schemes to mitigate adverse impacts upon European and Ramsar sites.

2.0.3 The requirement to undertake an assessment of plans or projects that are likely to have an effect upon European sites is given in Article 6(3) of the Habitats Directive.

2.0.4 The Habitats Directive is transposed into UK law through the Conservation of Habitats and Species Regulations 2017. Regulation 63 of the Habitats Regulations implements Article 6(3) of the Habitats Directive and requires the competent authority to complete an appropriate assessment of the implications of the plan or project for the European site in view of the site's conservation objectives before deciding to undertake a plan or project which is likely to have a significant effect on a European site. Regulation 105 applies to land use plans, with Regulation 106 pertaining to Neighbourhood Development Plans specifically.

Habitats Regulations Assessment

- 2.0.5 The Neighbourhood Planning (General) Regulations 2012 state that submitted neighbourhood plans need to be accompanied by a statement explaining how the proposed neighbourhood plan meets a series of 'basic conditions', which are set out in Schedule 4B of the 1990 Town and Country Planning Act. These basic conditions include a requirement to demonstrate how the plan is compatible with assimilated obligations (previously referred to as EU obligations), which includes the need to undertake a Habitats Regulations Assessment to satisfy the Habitats Directive.

3 The Habitats Regulations Assessment Process

- 3.0.1 The UK Government's Planning Practice Guidance on Appropriate Assessment explains that there are several distinct stages of assessment which must be undertaken in order to achieve compliance with the Habitats Regulations.

3.1. TASK 1: HRA SCREENING

- 3.1.1 The HRA screening stage involves consideration of whether the plan or project is likely to have a significant effect on a European Site, either alone and in combination with other plans or projects.
- 3.1.2 A 'likely significant effect' may be defined as a 'possible significant effect; one whose occurrence cannot be excluded on the basis of objective information'.
- 3.1.3 The HRA screening stage firstly involves gathering information on the European sites that may be affected, through geographical proximity or a potential impact pathway which links the plan to an effect on a European Site.
- 3.1.4 Following this, the HRA considers whether the plan is likely to result in a significant effect upon these European sites, either alone or in combination with other projects and plans, through the test of likely significant effect.
- 3.1.5 Measures which have been specifically added to achieve the purpose of avoiding or reducing the harmful effects of a plan upon a European site, known as mitigation measures, should not be considered at the screening stage.
- 3.1.6 If the HRA screening concludes that there is no likely significant effect on a European site, then further assessment is deemed unnecessary.
- 3.1.7 However, if it is found that the plan would have a likely significant effect on a European site then the next stage of assessment, known as the Appropriate Assessment stage, is required.

3.2. TASK 2: APPROPRIATE ASSESSMENT

- 3.2.1 If a proposed plan or project is considered likely to have a significant effect on a European Site, either individually or in combination with other plans or projects, then an appropriate assessment of the implications for the site, in view of the site's conservation objectives, must be undertaken.
- 3.2.2 The scope and content of an appropriate assessment will depend on the nature, location, duration and scale of the proposed plan and the European sites which may be affected. However, the assessment needs to be proportionate and sufficient to support the task of determining whether the plan will adversely affect the integrity of a European site.

3.3. TASK 3: MITIGATION

- 3.3.1 The competent authority may agree to the plan or project only after having ruled out adverse effects on the integrity of the European site.

Habitats Regulations Assessment

Bere Regis Neighbourhood Plan Review

- 3.3.2 Where it cannot be concluded that there will be no adverse effects on a site's integrity, there is a need to consider potential mitigation.
- 3.3.3 Mitigation measures are protective measures forming part of a project and are intended to avoid or reduce any direct adverse effects that may be caused by a plan or project, to ensure that it does not have an adverse effect on the integrity of a European site.
- 3.3.4 Any measures used to inform the decision about the effects on the integrity need to be sufficiently secured and likely to work in practice.

4 The Bere Regis Neighbourhood Plan Review

- 4.0.1 The Bere Regis Neighbourhood Plan was ‘made’ (adopted) by Dorset Council in June 2019.
- 4.0.2 Bere Regis Parish Council, as the Qualifying Body, are currently reviewing the adopted Bere Regis Neighbourhood Plan.
- 4.0.3 The proposed changes to the plan which, other than minor changes such as grammatical changes and updates since the neighbourhood plan was made, are presented in Figure 4.1 below. Please note that the plan period (2019 – 2034), vision and objectives remain unchanged.

Figure 4.1: The proposed changes to the Bere Regis Neighbourhood Plan through the neighbourhood plan review process.

Policy in Bere Regis Neighbourhood Plan	Proposed change
BR1: Settlement Boundary	Policy deleted from the plan.
BR2: SANG	The reviewed policy provides updated references, but does not alter the SANG’s location, scale, or delivery mechanism.
BR4: Groundwater	Policy deleted from the plan.
BR5: Noise Attenuation	The updated policy, which now has the policy reference BR3, continues to apply to relevant allocated sites (namely BR1a: Back Lane (previously covered by Policy BR7)) and sets out expectations for effective noise mitigation at the planning and design stage.
BR6: Affordable Housing Tenures	Policy deleted from the plan.
BR7: Residential Development	<p>In the 2019 Neighbourhood Plan, housing allocations were grouped together under Policy BR7, which set out broad support for five identified development sites. The original policy provided a relatively high-level framework without prescriptive requirements, with additional expectations and design considerations included in the supporting text rather than within the policy itself.</p> <p>As part of the Neighbourhood Plan Review, these allocations have been restructured and translated into individual site-specific policies (BR1a–e). This approach allows the unique characteristics, constraints and opportunities of each site to be clearly articulated. The updated policies incorporate relevant content from the 2019 supporting text to bring these requirements into the main policy wording where appropriate.</p> <p>The updated policies also reflect a refined understanding of site capacity, informed by planning history and consultation with</p>

Habitats Regulations Assessment

Bere Regis Neighbourhood Plan Review

	<p>statutory consultees, including Dorset Council Highways, Dorset Council Historic Conservation, Natural England. While the approximate housing figures for some sites have been slightly adjusted, these changes are minimal and remain in conformity with the area’s housing requirement (see SE8). No new site allocations have been introduced.</p> <p>An opportunity is also identified for allocated sites to incorporate biodiversity enhancements such as nesting boxes, bat roosting features, bee bricks, and native planting. This aligns with Policy E10 (Biodiversity and Geodiversity) of the Purbeck Local Plan (2018–2034), and the environmental objectives of the original Neighbourhood Plan related to local habitats and green infrastructure.</p> <p>The suggested provisions introduced are modest in scale, widely used, and cost-effective to implement. They do not impose onerous obligations on developers or materially affect site viability or layout. They offer clarity and predictability in a policy area that is already subject to national and local requirements.</p>
<p>BR8: North Street Employment</p>	<p>Policy deleted from the plan.</p>
<p>BR9: Community Facilities</p>	<p>Policy BR4 Community Facilities in the Neighbourhood Plan Review seeks to alter the approach of Policy BR9 in the original neighbourhood plan. This was due to Policy BR9 being considered a duplication of Purbeck Local Plan Policies EE3 and I7. The revised policy wording BR4 adds local detail designed to aid decision-takers in applying Policies EE3 and I7 to development proposals in the Parish. While the structure and focus of the policy have been revised, its intent to protect and support community facilities remains consistent with the original plan and therefore does not represent a change in the strategic direction of the Neighbourhood Plan.</p>
<p>BR10: Local Green Space</p>	<p>Policy BR5 in the Neighbourhood Plan Review carries forward seven existing Local Green Space Designations from the Original Neighbourhood Plan (Previously BR10). No new sites are proposed.</p>

5 Habitats Regulations Assessment: Screening

- 5.0.1 The first stage of the HRA process is the screening stage, the purpose of which is to determine whether the plan is likely to result in a significant effect upon a European Site.
- 5.0.2 In order to determine whether the Bere Regis Neighbourhood Plan Review is likely to result in a significant effect upon a European Site, it is first necessary to identify those European Sites which may be affected by the plan. This involves gathering information about the European Sites within the neighbourhood plan area and its vicinity.
- 5.0.3 The European Sites within approximately 20km of the Bere Regis Neighbourhood Area are shown in Figure 5.1. Further details of these European Sites are presented in Appendix A.

Figure 5.1: European sites within 20km of the Bere Regis Neighbourhood Area

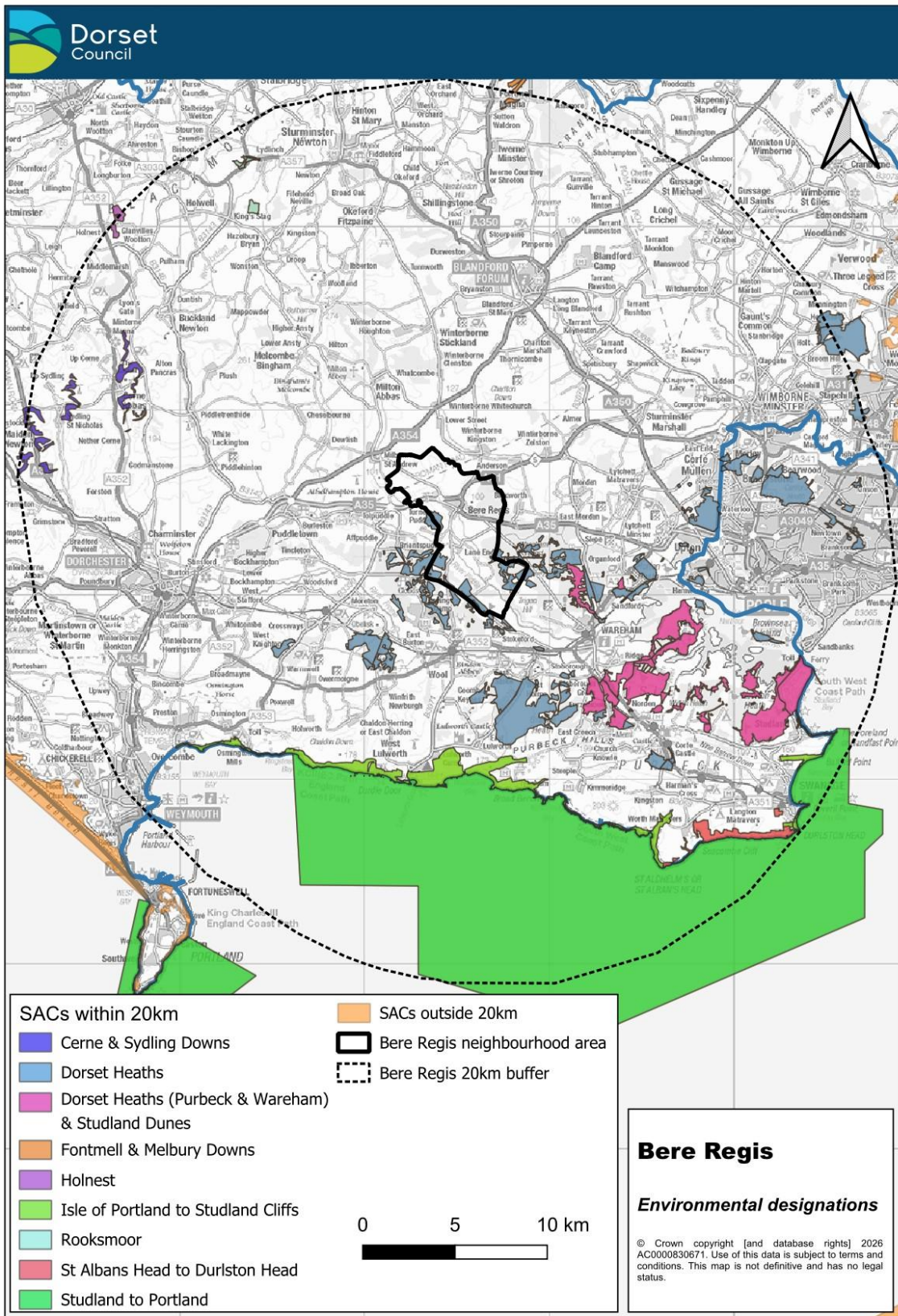
European Site	Designation	Approx. Distance/orientation from Neighbourhood Plan area
Dorset Heathlands	SPA, Ramsar	Within plan area (and numerous locations surrounding the plan area)
Dorset Heaths	SAC	Within plan area (and numerous locations surrounding the plan area)
Dorset Heaths (Purbeck & Wareham) & Studland Dunes	SAC	1.9 km to the east
Poole Harbour	SPA, Ramsar	4.4 km to the southeast
Isle of Portland to Studland Cliffs	SAC	7.4 km to the south
Solent and Dorset Coast	SPA	8.5 km to the south
Studland to Portland	SAC	8.5 km to the south
Cerne & Sydling Downs	SAC	13.5 km to the west
Rooksmoor	SAC	15.1 km to the northwest
St Alban's Head to Durlston Head	SAC	15.1 km to the southeast
Fontmell and Melbury Downs	SAC	18.7 km to the north
Holnest	SAC	19.3 km to the northwest

- 5.0.4 Maps showing the location and extent of the European sites are shown in the Figures on the following pages.

Habitats Regulations Assessment

Bere Regis Neighbourhood Plan Review

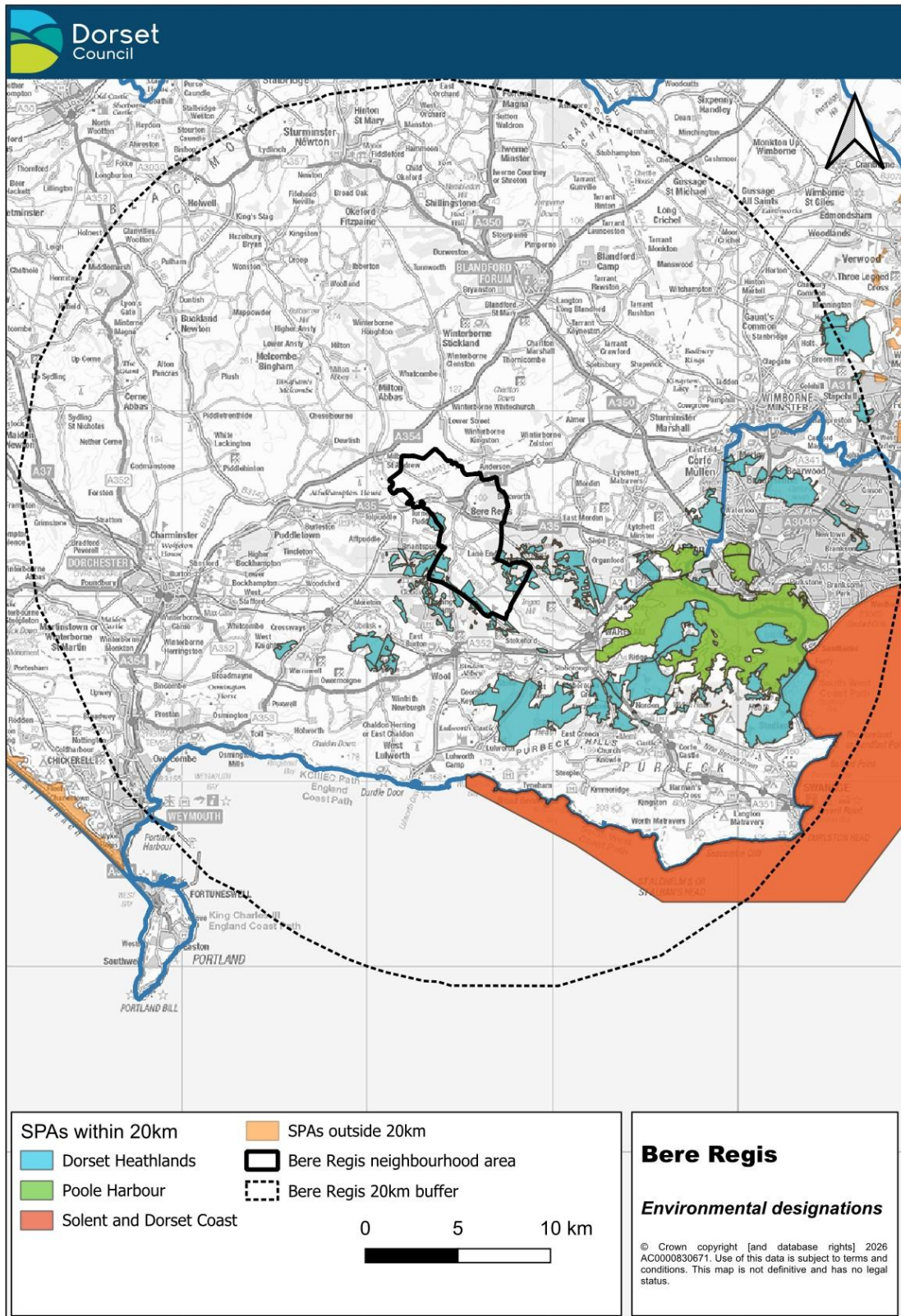
Figure 5.2: Land designated as SAC within 20km of Bere Regis Neighbourhood Area



Habitats Regulations Assessment

Bere Regis Neighbourhood Plan Review

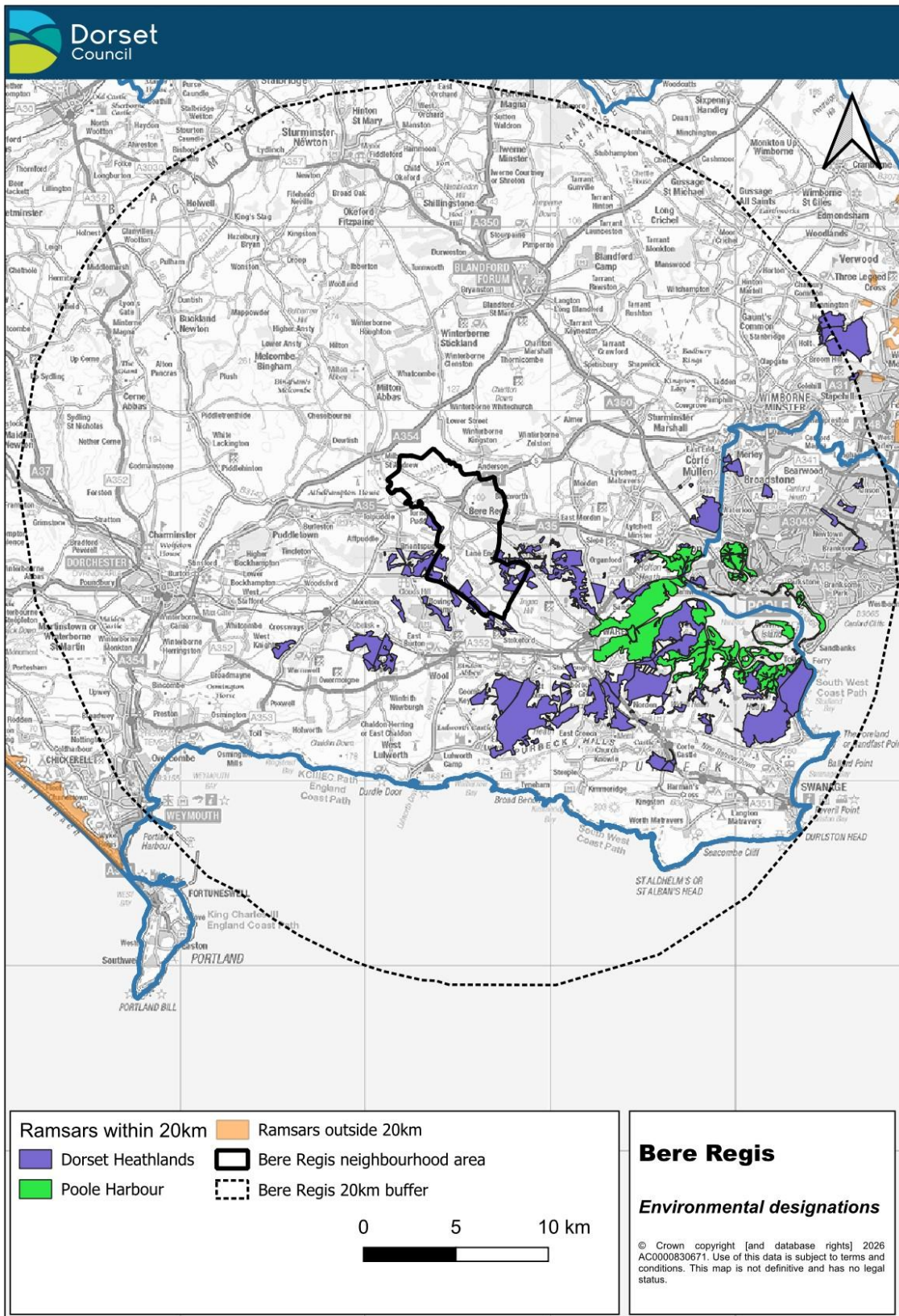
Figure 5.3: Land designated as SPA within 20km of Bere Regis Neighbourhood Area



Habitats Regulations Assessment

Bere Regis Neighbourhood Plan Review

Figure 5.4: Land designated as Ramsar within 20km of Bere Regis Neighbourhood Area



Habitats Regulations Assessment

Bere Regis Neighbourhood Plan Review

- 5.0.5 Having identified the characteristics of the European sites within approximately 20km of the Bere Regis Neighbourhood Plan Area, it is now possible to identify those European Sites which may be linked to the plan through a known 'pathway'.
- 5.0.6 A 'pathway' may be defined as the means by which a change in activity leads to an effect. In this instance, a pathway may be defined as the means by which a change in activity due to the Bere Regis Neighbourhood Plan Review leads to an effect on a European Site.
- 5.0.7 At the initial stage of the screening, all of the potential pathways were identified by considering the potential threats, pressures and activities to the European Sites provided in the official citation which are relevant given the scope of the Bere Regis Neighbourhood Plan Review (Figure 5.5). Those potential threats, pressures and activities that were not considered to be linked to the Bere Regis Neighbourhood Plan Review through a pathway were discounted from further consideration.

Figure 5.5: The potential threats, pressures and activities to European sites within 20km of the Bere Regis Neighbourhood Plan area

Potential threat, pressure or activity	European Site
Water pollution	Dorset Heathlands Ramsar Poole Harbour SPA and Ramsar Holnest SAC
Air pollution	Dorset Heathlands SAC, SPA and Ramsar Cerne & Sydling Downs SAC Rooksmoor SAC Fontmell and Melbury Downs SAC
Public access, disturbance and other human intrusion	Dorset Heathlands SPA
Sport, leisure and recreational activities	Dorset Heaths SAC St Alban's Head to Durlston Head SAC Isle of Portland to Studland Cliffs SAC Cerne & Sydling Downs SAC Rooksmoor SAC Fontmell and Melbury Downs SAC
Habitat Fragmentation	Dorset Heathlands SPA

- 5.0.8 Following the identification of all of the possible pathways, the habitats regulations assessment screening then considered these possible pathways in more detail to determine whether or not they represent a credible or plausible pathway.
- 5.0.9 The following sections of this chapter explores each of the potential pathways which have been identified according to the threat, pressure or activity.

5.1. WATER POLLUTION

DORSET HEATHLANDS RAMSAR

- 5.1.1 The Dorset Heathlands Ramsar occupies an extensive but fragmented area in the southeast of Dorset.
- 5.1.2 The Dorset Heathlands Ramsar is amongst the best examples of wet heaths and acid mires in lowland Britain, and supports a large assemblage of nationally rare and scarce wetland plant species and invertebrates.
- 5.1.3 Urban development in close proximity to the Dorset Heathlands may result in:
- Changes in pH, nutrient status, turbidity of water supplies to heathland;
 - Enrichment and pollutants from urban run-off;
 - Pollutants from mis-connections, storm overflows, spills, accidents;
 - Diversion of pre-existing natural water sources away from heathland catchments; and
 - Changes in heathland hydrology and leakage in underground pipes and sewers as a result of service infrastructure.
- 5.1.4 The Dorset Heathlands Planning Framework 2020-25 is an adopted Supplementary Planning Document (SPD) by Dorset Council. The main purpose of the SPD is to provide a mechanism for mitigating the impacts upon the Dorset heaths from new development.
- 5.1.5 The SPD ensures that residential development within 400m of the Dorset Heaths European Site is not permitted due to impacts upon the designation. Residential development within the area between 400m and 5km from the Dorset Heaths will result in a likely significant effect which must be adequately mitigated against in order to avoid an adverse effect upon integrity of the designation. Therefore, the impacts of residential development are largely a consideration within 5km of the Dorset Heaths.
- 5.1.6 Given that the Bere Regis Neighbourhood Area includes areas of the Dorset Heaths, and is in close proximity to other areas of the Dorset Heaths, there is a viable pathway with the Dorset Heaths and, therefore, there could be likely significant effects arising from the neighbourhood plan including the sites allocated in it.

POOLE HARBOUR SPA AND RAMSAR

- 5.1.7 Poole Harbour is a large natural harbour comprising extensive tidal mudflats, seagrass beds and saltmarsh, together with reedbed, freshwater marsh and wet grassland habitats.

- 5.1.8 The Poole Harbour Special Protection Area (SPA) designation recognises the international importance of Poole Harbour for bird species. The extensive intertidal mudflats provide feeding habitat for overwintering waterbirds, whilst the saltmarsh and reedbed habitats which fringe the landward side of the harbour provide roosting areas as well as feeding areas for birds.
- 5.1.9 The qualifying interest species for the Poole Harbour Special Protection Area (SPA) include overwintering populations of shelduck *Tadorna tadorna*, pied avocet *Recurvirostra avosetta*, Icelandic-race black-tailed godwit *Limosa limosa islandica* and an overwintering assemblage of waterbirds. Also included are the breeding populations of Mediterranean gull *Larus melanocephalus*, common tern *Sterna hirundo* and Sandwich tern *Sterna sandvicensis*, and Aquatic Warbler *Acrocephalus paludicola* and Little Egret *Egretta garzetta* which are on passage.
- 5.1.10 The Poole Harbour Ramsar designation recognises the international importance of Poole Harbour as a wetland, noting that Poole Harbour is the best and largest example of a natural bar-built estuary with lagoonal characteristics in Britain. The Ramsar designation further recognises the importance of the calcareous fens and peatland mire habitats which are of exceptional conservation importance.
- 5.1.11 In terms of species, the Ramsar designation also recognises the importance of the site for breeding wildfowl and overwintering bird species in addition to two species of nationally rare plant, one nationally rare alga, and at least three British Red data book invertebrate species.
- 5.1.12 Qualifying development, which includes residential development, within the catchment of Poole Harbour needs to be nutrient neutral. Nutrient neutrality is required in Poole Harbour to prevent excessive nitrogen from causing hypertrophication, an ecological breakdown where algae blooms block sunlight and deplete oxygen, killing fish and smothering protected estuarine habitats.
- 5.1.13 Applicants or developers for qualifying development in Poole Harbour's hydrological catchment must secure nutrient mitigation for their development proposal. Mitigation can be secured:
- on-site, or through other land owned by the applicant or developer (as an example mitigation may include changes in land management to offset impacts or a new wastewater treatment works managed by a [NAV](#) water company)
 - through an agreement with an accredited third-party mitigation provider
 - through an agreement with Dorset and BCP Council acting in their capacity as a nutrient mitigation provider
- 5.1.14 In all instances, the mitigation will need to be secured in perpetuity through the necessary legal agreements or planning condition and details of the mitigation measures must be presented by the applicant or developer as part of their nutrient neutrality statement.
-

- 5.1.15 Given that the Bere Regis Neighbourhood Area is in the Poole Harbour hydrological catchment, there is a viable pathway with Poole Harbour and, therefore, there could be likely significant effects arising from the neighbourhood plan including the sites allocated in it.

HOLNEST SAC

- 5.1.16 The Holnest SAC is approximately 19.3 km from the site. Given this distance and the level of growth expected through the plan, which is approximately 109 dwellings in the period up to 2034, it is considered unlikely that there is a viable impact pathway that would result in the proposed plan to a likely significant water quality effect at the Holnest SAC.

5.2. AIR POLLUTION

- 5.2.1 Atmospheric nitrogen resulting from emissions to air from road traffic may result in the deposition of atmospheric nitrogen into the soil. This causes the enrichment of soils, affecting those habitats which are necessarily naturally low in nutrients. The sensitive habitats within 20km of the neighbourhood plan area include the Dorset Heathlands SAC, SPA and Ramsar within the plan area, and within close proximity to it, chalk grasslands at the Cerne and Sydling Downs SAC and at the Fontmell and Melbury Downs SAC. A further sensitive habitat is the neutral and acid grassland meadows at the Rooksmoor SAC.
- 5.2.2 Natural England's guidance note on the assessment of road traffic emissions under the habitats regulations advises a series of steps at the HRA screening stage to determine whether a proposal will result in a likely significant effect. These steps are set out below.
- 5.2.3 **Step 1** of the Natural England methodology asks the following question: Does the proposal give rise to emissions which are likely to reach a European site?
- 5.2.4 This initial screening step for air pollution assessment considers the distance between an emission source and the receptor, and factors including the scale of the proposal and source of emissions to determine whether emissions are likely to reach the European site.
- 5.2.5 Considering the distance of the plan area from the majority of these European Sites, and given the limited scale of development which will come forward as a consequence of the plan review (approximately 109 dwellings over the period to 2034), it is considered unlikely that the plan will result in an increase in emissions at the Cerne and Sydling Downs SAC, Fontmell and Melbury Downs SAC and Rooksmoor SAC. The effects on air quality upon these European sites therefore doesn't require further consideration.
- 5.2.6 Given that the Dorset Heathlands SAC, SPA and Ramsar are located within and near to the plan area, it is possible that emissions resulting from additional traffic associated with the 109 dwellings coming forward through the Plan Review may result in emissions which are likely to reach this European Site.
- 5.2.7 **Step 2** of the guidance asks: Are the qualifying features within 200m of a road sensitive to air pollution?

- 5.2.8 Some of the qualifying features of the Dorset Heathlands, as listed in Appendix A, are sensitive to air pollution.
- 5.2.9 **Step 3** of the guidance asks: Could the sensitive qualifying features of the site be exposed to emissions?
- 5.2.10 There are sections of the SAC, SPA and Ramsar that are adjacent/in close proximity to Rye Hill in the Plan Area and other roads just outside the Plan Area, and therefore the qualifying features are present within 200m of these roads and may be exposed to emissions.
- 5.2.11 **Step 4** involves the application of thresholds to consider the risk of road traffic emissions. Depending on the information available, the thresholds can be expressed in annual average daily traffic flow (AADT) or the predicted emissions.
- 5.2.12 Steps 4a and 4b apply the threshold alone and in combination with other development, with the threshold being 1000 AADT or less than 1% of the critical load of each qualifying feature.
- 5.2.13 The provision of 109 dwellings in the period up until 2034 is considered unlikely to result in an additional 1000 AADT on Rye Hill or on other roads just outside the Plan Area that are adjacent/in close proximity to sections of the European Site. Therefore, the thresholds in step 4 are not exceeded.
- 5.2.14 Following the steps set out in the Natural England guidance, it is concluded that the Bere Regis Neighbourhood Plan Review is not likely to result in a significant effect upon a European Site in respect of air pollution.
- 5.2.15 Whilst it cannot be taken into consideration at the screening stage due to mitigation not being a factor at the screening stage due to case law, as context please note that the Dorset Heathlands Interim Air Quality Strategy will apply for development in the plan area and will provide a strategy for mitigation against air quality impacts upon the heathlands.

5.3. PUBLIC ACCESS, DISTURBANCE AND OTHER HUMAN INTRUSION

- 5.3.1 Disturbance occurs where human activity influences a habitat or the population of species which it supports.
- 5.3.2 Disturbance can result in a physical effect upon a habitat, for example by causing damage through erosion or trampling, or indirect effects through changes in management due to human intrusion.
- 5.3.3 In terms of the effects upon species, disturbance may affect an animal's behaviour, affecting its distribution, breeding success and health, and ultimately its survival.

DORSET HEATHLANDS SPA

- 5.3.4 The Dorset Heathlands SPA supports populations of Dartford Warbler *Sylvia undata*, Nightjar *Caprimulgus europaeus* and Woodlark *Lullula arborea* during the breeding season and Hen Harrier *Circus cyaneus* and Merlin *Falco columbarius* over winter.

- 5.3.5 Public access and disturbance to breeding SPA birds, mostly by dogs, can affect their breeding success. This may have implications upon the populations of nightjar and woodlark in particular.
- 5.3.6 Other effects as a result of access and disturbance include predation by domestic cats and urban foxes and the illicit use of heaths for motorcycle scrambling. However, motorcycle use on heathlands has generally declined relative to previous levels in response to site wardening and alternative facilities being made available.
- 5.3.7 Further residential development in those areas surrounding the Dorset Heaths would result in an increase in population, leading to an increase in disturbance to birds. This is likely to result in a significant effect on the Dorset Heaths SPA.
- 5.3.8 As previously discussed, the Dorset Heathlands Planning Framework 2020-25 addressed the potential impacts of new development upon the Dorset Heaths by not permitting residential development within 400m of the Dorset Heaths and providing the appropriate mitigation within the area between 400m and 5km from the Dorset Heaths. Therefore, the impacts of residential development are largely a consideration within 5km of the Dorset Heaths.
- 5.3.9 Given that the Bere Regis Neighbourhood Area includes areas of the Dorset Heaths, and is in close proximity to other areas of the Dorset Heaths, there is a viable pathway with the Dorset Heaths and, therefore, there could be likely significant effects arising from the neighbourhood plan including the sites allocated in it.

5.4. SPORT, LEISURE AND RECREATIONAL ACTIVITIES

- 5.4.1 Many European Sites offer an attractive natural environment for sport, leisure and recreation.
- 5.4.2 Visitor numbers to the countryside in England are increasing¹. This may be due to the rising population, an increase in the amount of available leisure time as a result in the change to social conditions (such as greater leave entitlement) and greater accessibility as a result of more private vehicle ownership and improved transport infrastructure.

DORSET HEATHS SAC

- 5.4.3 Evidence shows that the Dorset Heaths are under significant pressure from an increasing number of people living nearby. As population grows, the impacts from human pressures and damage caused by domestic pets have the potential to cause adverse effects upon the protected habitats and species.
- 5.4.4 The main effects upon the Dorset Heaths as a result of development in close proximity to the Dorset Heaths include the following:

¹ Monitor of Engagement with the Natural Environment Survey (MENE) (Natural England, 2015)

- Loss of supporting habitats: decrease in the semi-natural habitat adjoining heaths which provide functional support;
- Predation: Fox, cat/rat predation on ground nesting birds and reptiles;
- Enrichment: results in vegetation changes particularly alongside paths due to dog excrement and from rubbish and garden waste dumping by roads and from gardens. Also as a result of vehicles in transport corridor;
- Roads: Increased fire risk from car thrown cigarettes, roads forming barriers to species mobility, road kills increasing mortality rates, and noise and light pollution from traffic;
- Service infrastructures, both over and under heathland, causing disturbance and providing poles which act as look-out posts for bird predators;
- Disturbance: May cause changes in breeding bird and animal distributions within and across sites, reduction in breeding success of birds/animals, and delayed breeding in SPA birds;
- Trampling: Results in changes to vegetation, creation of bare areas and subsequent soil erosion, damage to bare ground reptile and invertebrate habitats and populations, increases in path and track networks;
- Fire: May increase frequency of fires particularly in spring and summer, causing long term vegetation changes, increased mortality of heathland animals/birds, fragmentation/reduction of habitat on heaths; and
- Difficulties in heathland management: vandalism of signs and fences, opposition to management techniques such as tree felling, fencing and grazing, increased cost of heathland management.

5.4.5 The Dorset Heathlands Planning Framework 2020-25, which sets out a strategy for the avoidance and mitigation of impacts of new residential development upon the Dorset Heaths, shows that these impacts are most marked for developments within 400m of heathland sites. Any residential development in this area would result in a negative effect upon the Dorset designated site.

5.4.6 In the area between 400m and up to 5km from a heathland site ('5km buffer zone'), the effect of development is less marked but still likely to be significant if mitigation is not delivered.

5.4.7 The neighbourhood plan area includes areas of the Dorset Heaths SAC, and the sites proposed for housing in the plan review are within the 5km buffer zone within which residential development is likely to result in significant effect upon the SAC. Therefore, it is considered likely that the Bere Regis Neighbourhood Plan Review will result in a likely significant effect upon the Dorset Heaths from recreational pressure.

ST ALBAN'S HEAD TO DURLSTON HEAD SAC AND ISLE OF PORTLAND TO STUDLAND CLIFFS SAC

- 5.4.8 The St Alban's Head to Durlston Head SAC and Isle of Portland to Studland Cliffs SAC support species rich calcareous grassland with particularly large populations of several species that are scarce in the UK. The SACs are subject to a number of recreational pressures. This includes pressure from walkers (with and without dogs). The South West Coastal Path runs the length of the SACs. Over 1 million people walk some of the South West Coastal Path between Poole and Lyme Regis each year. The cliffs within the SACs are also popular with climbers.
- 5.4.9 Climbing activities can damage ledges and the vegetation on them through trampling and the abrasion of ropes, although climbing is a national niche activity rather than something directly relatable to local population growth. Additionally, the volume of footfall and the narrow depth of the SACs in some areas can cause rapid trampling of calcareous grassland as well as nutrient enrichment from dog faeces degrading calcareous grassland to neutral grassland.
- 5.4.10 The St Alban's Head to Durlston Head SAC and Isle of Portland to Studland Cliffs SAC are approximately 15.1 km and 7.4 km from the southern boundary of the NP area respectively. Given these distances from the plan area and the small number of dwellings (109 dwellings) proposed in the plan review it is concluded that such a small increase in net dwellings at these distances from the SACs is likely to be outside of the core catchment of the SACs and inconsequential in scale, and is unlikely to have a significant effect on increasing recreational pressure within the European sites. Therefore, the plan review will not cause a likely significant effect upon the SACs.

CERNE AND SYDLING DOWNS SAC

- 5.4.11 The Cerne and Sydling Downs SAC is approximately 13.5 km from the site. In addition to the distance of the SAC from the plan area, there is wealth of accessible countryside in the area between the SAC and plan area which could be used for recreational purposes.
- 5.4.12 Therefore, the likely use of the Cerne and Sydling Downs SAC for sport, leisure and recreational purposes is considered to be minimal and the provision of 109 dwellings within the plan area in the period up to 2034 is unlikely to result in a likely significant effect upon the SAC.

ROOKSMOOR SAC

- 5.4.13 The Rooksmoor SAC is approximately 15.1 km from the site. In addition to the distance of the SAC from the plan area, there is wealth of accessible countryside in the area between the SAC and plan area which could be used for recreational purposes.
- 5.4.14 Therefore, the likely use of the Rooksmoor SAC for sport, leisure and recreational purposes is considered to be minimal and the provision of 109 dwellings in the plan area in the period up to 2034 is unlikely to result in a likely significant effect upon the SAC.

FONTMELL & MELBURY DOWNS SAC

- 5.4.15 The Fontmell & Melbury Downs SAC is approximately 18.7 km from the site. In addition to the distance of the SAC from the plan area, there is wealth of accessible countryside in the area between the SAC and plan area which could be used for recreational purposes.
- 5.4.16 Therefore, the likely use of the Fontmell & Melbury Downs SAC for sport, leisure and recreational purposes is considered to be minimal and the provision of 109 dwellings in the plan area in the period up to 2034 is unlikely to result in a likely significant effect upon the SAC.

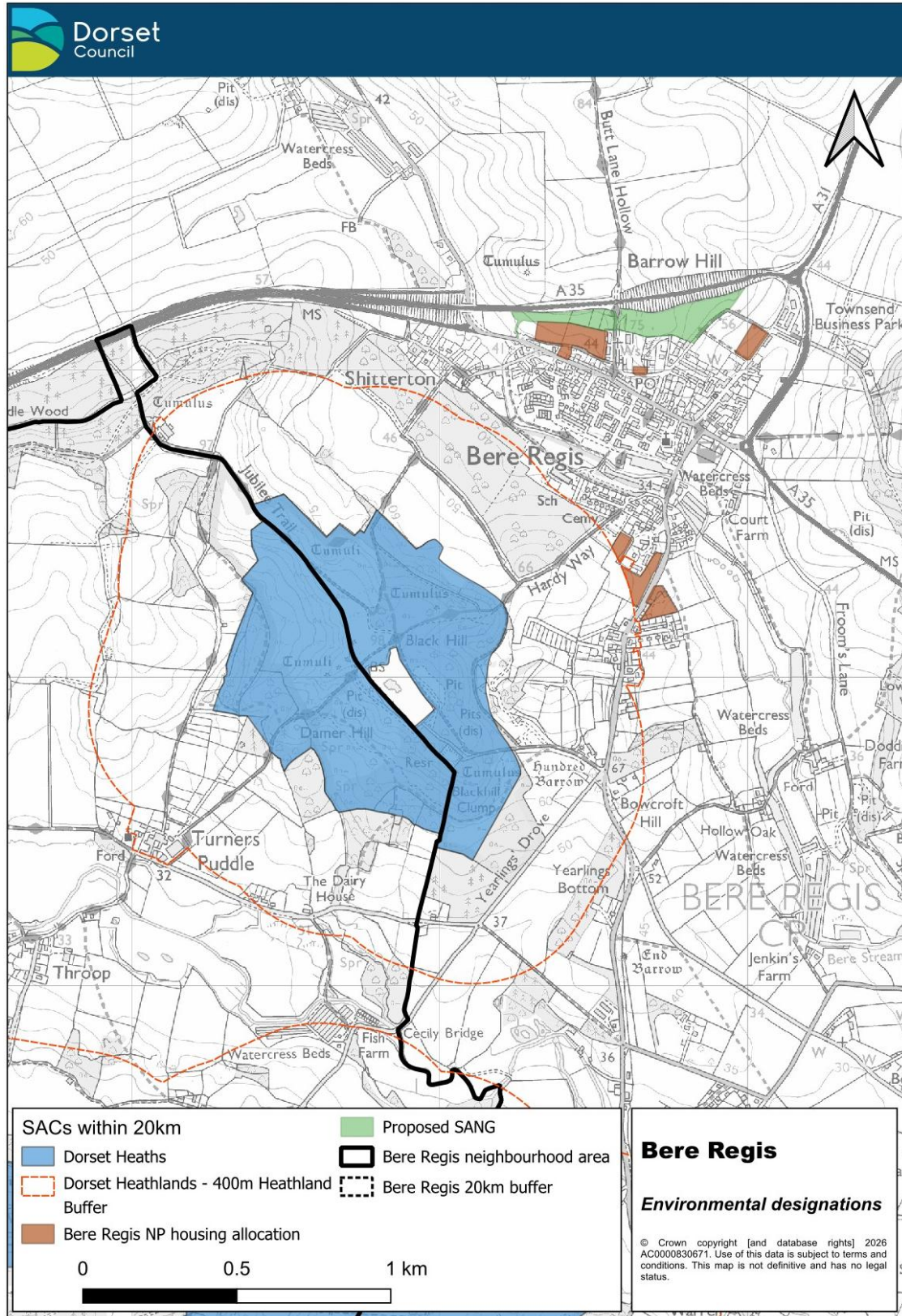
5.5. HABITAT FRAGMENTATION

DORSET HEATHS SAC

- 5.5.1 Habitat fragmentation occurs when a large area of habitat is split into smaller areas, resulting in populations becoming isolated and the overall area of the habitat being reduced.
- 5.5.2 Habitat fragmentation may occur as a result of development, for example housing or infrastructure such as roads, dividing a habitat into smaller parcels of land in addition to resulting in habitat loss.
- 5.5.3 In the mid-18th century, the Dorset Heathlands occupied an area of approximately 36,000ha in southeast Dorset.
- 5.5.4 Over time the extent of the Dorset Heathlands reduced, largely as a result of agriculture, forestry and urban development. In 1996, the coverage of the Dorset Heathlands had dramatically reduced to approximately 7,373ha, and by 2019, the coverage of the Dorset Heathlands had fallen to approximately 6,199ha, representing a loss of around 83% of heathland habitat.
- 5.5.5 In addition to the loss of habitat, the Dorset Heathlands has become fragmented. In 1979, the Dorset Heathland existed in 768 separate parcels, 88% of which were less than 10ha (Webb & Haskins 1980).
- 5.5.6 Fragmentation of the Dorset Heathlands may reduce the suitability of the remaining habitat and cause them to be more susceptible to recreational pressure and the effects of wildfires and arson.
- 5.5.7 Studies have recorded negative responses to fragmentation for the species including the Dartford Warbler *Sylvia undata*, a qualifying feature for the Dorset Heathlands SPA. It is suggested that Dartford warblers avoid smaller and more isolated heath patches.
- 5.5.8 In recent years, the loss and fragmentation of the Dorset Heaths has almost halted through changes in national and local policy, including the Dorset Heathlands Planning Framework which has been in place since 2007 and prevents further habitat fragmentation.
- 5.5.9 The Bere Regis Neighbourhood Area includes areas of the Dorset Heaths and is in close proximity to other areas of the Dorset Heaths. However, as shown in Figure 5.6 on the following page, no development is proposed on the Dorset Heaths. Consequently,

development proposed in the plan review will not result in further habitat fragmentation of the Dorset Heaths.

Figure 5.6: Location of Development Sites and Dorset Heaths



6 Appropriate Assessment

- 6.0.1 The HRA screening has identified a likely significant effect upon the Dorset Heathlands Ramsar and Poole Harbour SPA and Ramsar as a result of water pollution. The HRA has also identified a likely significant effect on the Dorset Heathlands SPA in respect of public access, disturbance and other human intrusion and the Dorset Heaths SAC in relation to recreational pressure.
- 6.0.2 Therefore, the Appropriate Assessment set out in the following chapter is required to determine whether the Bere Regis Neighbourhood Plan Review would result in an adverse effect upon the integrity of these European Sites.

6.1. RECREATIONAL PRESSURE

- 6.1.1 The HRA screening identified a likely significant effect from sport, leisure and recreational activities upon the Dorset Heath SAC, and from public access, disturbance, and other human intrusion upon the Dorset Heathlands SPA. These issues are overlapping and relate to one another, and are considered under the broad term 'recreational pressure' for the purposes of the Appropriate Assessment.
- 6.1.2 Policy BR2 of the Bere Regis Neighbourhood Plan provides mitigation for the impacts upon the Dorset Heaths, in the form of a 4.5ha area of Suitable Alternative Natural Greenspace (SANG) to the north of the village.
- 6.1.3 The purpose of the SANG is to deflect recreational pressure upon the heathland habitats from those inhabiting the 109 dwellings coming forward through the plan, by providing a more attractive alternative to use for recreational purposes, particular dog walking which accounts for a large proportion of the impacts upon the Dorset Heaths.
- 6.1.4 This mitigation accords with the Dorset Heathlands Planning Framework 2020-25, which provides a strategy for mitigation the impacts of recreational pressure upon the Dorset Heaths.
- 6.1.5 The delivery of this mitigation will ensure that recreational pressure effects are reduced to an acceptable level and an adverse effect upon the integrity of the Dorset Heaths European Site is avoided.

6.2. WATER POLLUTION

- 6.2.1 The HRA screening identified a likely significant effect from water pollution upon the Poole Harbour SPA and Ramsar, given the need for development which results in an increase in overnight accommodation to achieve nutrient neutrality for nitrogen.
- 6.2.2 The changes to the neighbourhood plan text as part of this review includes updated information about the need to achieve nutrient neutrality, from paragraph 4.17 and 4.18.
- 6.2.3 Furthermore, the policies which bring forward overnight accommodation within the plan area all include criteria which states that 'The development will only be supported where it

would not lead to an adverse effect upon the integrity, either alone or in-combination, directly or indirectly, on European sites’.

- 6.2.4 This will ensure that nutrient neutrality is achieved across the plan area, and an adverse effect upon the integrity of the Poole Harbour SPA and Ramsar is prevented.
- 6.2.5 The HRA screening also identified an adverse effect upon the integrity of the Dorset Heaths Ramsar from water quality impacts. The Dorset Heathlands Planning Framework 2020-25 will ensure that there is no residential development within 400m of the Dorset Heaths, ensuring that any potential water quality impacts (e.g through surface water runoff, application of fertiliser, herbicide, or pesticide, or leaking pipework associated with residential development) are avoided.

7 Conclusion

- 7.0.1 The HRA screening exercise considered the potential threats, pressures and activities which may affect the European sites within 20km of the Bere Regis Neighbourhood Area.
- 7.0.2 The HRA screening identified a likely significant effect as a result of water quality impacts upon the Poole Harbour and Dorset Heaths European Sites, the recreational pressure impacts upon the Dorset Heaths as a result of the plan.
- 7.0.3 The Appropriate Assessment concluded that adverse effects upon the integrity of the Poole Harbour European Sites from water quality are avoided as a result of the criteria applied to the development policies in the plan. Adverse effects upon the Dorset Heaths from water quality impacts were avoided due to the application of the Dorset Heathlands Planning Framework 2020-25 SPD, which prevents development within 400m of the Dorset Heaths and therefore prevents water quality impacts.
- 7.0.4 The Appropriate Assessment also concluded that adverse effects upon the integrity of the Dorset Heaths European Sites from recreational pressure are avoided due to policy BR2, which delivers a SANG to the north of the village, deflecting recreational pressure from the heathland designation in accordance with the Dorset Heathlands Planning Framework 2020-25 SPD.
- 7.0.5 Therefore, it is concluded that the Bere Regis Neighbourhood Plan review will not result in an adverse effect upon the integrity of a European Site.

Appendix A: Details of European Sites within 20km of the Bere Regis Neighbourhood Area

Habitats Regulations Assessment

Bere Regis Neighbourhood Plan Review

European Site	Qualifying Features	Conservation Objectives	Potential threats, pressures and activities with impacts
<p>Cerne and Sydling Downs SAC</p>	<p>Annex 1 habitats: Semi-natural dry grasslands and scrubland facies on calcareous substrates (Festuco-Brometalia) (* important orchid sites)</p> <p>Annex 2 species (present as a qualifying feature but not a primary reason for selection of this site): Marsh fritillary butterfly <i>Euphydryas (Eurodryas, Hypodryas) aurinia</i></p>	<p>Ensure that the integrity of the site is maintained or restored as appropriate, and ensure that the site contributes to achieving the Favourable Conservation Status of its Qualifying Features, by maintaining or restoring;</p> <ul style="list-style-type: none"> • The extent and distribution of qualifying natural habitats and habitats of qualifying species • The structure and function (including typical species) of qualifying natural habitats • The structure and function of the habitats of qualifying species • The supporting processes on which qualifying natural habitats and the habitats of qualifying species rely • The populations of qualifying species, and, • The distribution of qualifying species within the site. 	<p>Grazing; Fertilisation; Interspecific floral relations; Other ecosystem modifications</p>
<p>Dorset Heathlands Ramsar</p>	<p>Ramsar criterion 1: Contains particularly good examples of (i) northern Atlantic wet heaths with cross-leaved heath <i>Erica tetralix</i> and (ii) acid mire with Rhynchosporion.</p>	<p>Natural England considers the Conservation Advice packages for the overlapping European Sites to be sufficient to support the management of the Ramsar interests at this site.</p>	<p>Acid rain; pollution.</p>

Habitats Regulations Assessment

Bere Regis Neighbourhood Plan Review

European Site	Qualifying Features	Conservation Objectives	Potential threats, pressures and activities with impacts
	<p>Ramsar criterion 2: Supports 1 nationally rare and 13 nationally scarce wetland plant species, and at least 28 nationally rare wetland invertebrate species.</p> <p>Ramsar criterion 3: Has a high species richness and high ecological diversity of wetland habitat types and transitions, and lies in one of the most biologically-rich wetland areas of lowland Britain, being continuous with three other Ramsar sites: Poole Harbour, Avon Valley and The New Forest.</p>		
Dorset Heathlands SPA	<p>During the breeding season; Dartford Warbler <i>Sylvia undata</i>; Nightjar <i>Caprimulgus europaeus</i>; Woodlark <i>Lullula arborea</i></p> <p>Over winter; Hen Harrier <i>Circus cyaneus</i> Merlin <i>Falco columbarius</i></p>	<p>Ensure that the integrity of the site is maintained or restored as appropriate, and ensure that the site contributes to achieving the aims of the Wild Birds Directive, by maintaining or restoring;</p> <ul style="list-style-type: none"> • The extent and distribution of the habitats of the qualifying features • The structure and function of the habitats of the qualifying features • The supporting processes on which the habitats of the qualifying features rely • The population of each of the qualifying features, and, • The distribution of the qualifying features within the site. 	<p>Inappropriate scrub control; Public access/disturbance; Undergrazing; Forestry and woodland management ; Drainage; Water pollution; Invasive species; Habitat fragmentation; Wildfire/arson; Air pollution (atmospheric deposition); Deer</p>

European Site	Qualifying Features	Conservation Objectives	Potential threats, pressures and activities with impacts
Dorset Heaths SAC	<p>Annex 1 habitats: Northern Atlantic wet heaths with <i>Erica tetralix</i> European Dry Heaths; Depressions on peat substrates of the Rhynchosporion</p> <p>Annex 1 habitats (present as a qualifying feature but not a primary reason for selection of this site): Molinia meadows on calcareous, peaty or clayey-silt-laden soils (<i>Molinia caerulea</i>); Calcareous fens with <i>Cladium mariscus</i> and species of the Caricion davallianae; Alkaline fens; Old acidophilous oak woods with <i>Quercus robur</i> on sandy plains</p> <p>Annex 2 species: Southern damselfly <i>Coenagrion mercuriale</i></p> <p>Annex 2 species (present as a qualifying feature but not a primary reason for selection of this site): Great crested Newt <i>Triturus cristatus</i></p>	<p>Ensure that the integrity of the site is maintained or restored as appropriate, and ensure that the site contributes to achieving the Favourable Conservation Status of its Qualifying Features, by maintaining or restoring;</p> <ul style="list-style-type: none"> • The extent and distribution of qualifying natural habitats and habitats of qualifying species • The structure and function (including typical species) of qualifying natural habitats • The structure and function of the habitats of qualifying species • The supporting processes on which qualifying natural habitats and the habitats of qualifying species rely • The populations of qualifying species • The distribution of qualifying species within the site 	<p>Grazing; Invasive non-native species; Outdoor sports and leisure activities, recreational activities Bionetic evolution; succession; Human induced changes in hydraulic conditions.</p>
Dorset Heaths (Purbeck and Wareham) and Studland Dunes SAC	<p>Annex 1 habitats: Embryonic shifting dunes; Shifting dunes along the shoreline with <i>Ammophila arenaria</i> (white dunes); Atlantic decalcified fixed dunes (<i>Calluno-Ulicetea</i>);</p>	<p>Ensure that the integrity of the site is maintained or restored as appropriate, and ensure that the site contributes to achieving the Favourable Conservation Status of its Qualifying Features, by maintaining or restoring:</p>	<p>Human induced changes in hydraulic conditions; Outdoor sports and leisure activities, recreational activities;</p>

European Site	Qualifying Features	Conservation Objectives	Potential threats, pressures and activities with impacts
	<p>Humid dune slacks; Oligotrophic waters containing very few minerals of sandy plains (<i>Littorelletalia uniflorae</i>); Northern Atlantic wet heaths with <i>Erica tetralix</i>; Temperate Atlantic wet heaths with <i>Erica ciliaris</i> and <i>Erica tetralix</i>; European dry heaths; Depressions on peat substrates of the Rhynchosporion; Bog woodland.</p> <p>Annex 1 habitats (present as a qualifying feature but not a primary reason for selection of this site): Molinia meadows on calcareous, peaty or clayey-silt-laden soils (<i>Molinion caeruleae</i>); Calcareous fens with <i>Cladium mariscus</i> and species of the <i>Caricion davallianae</i>; Alkaline fens; Old acidophilous oak woods with <i>Quercus robur</i> on sandy plains;</p> <p>Annex 2 species: Southern damselfly <i>Coenagrion mercuriale</i></p> <p>Annex 2 species (present as a qualifying feature but not a primary reason for selection of this site): Great crested newt <i>Triturus cristatus</i></p>	<ul style="list-style-type: none"> • The extent and distribution of qualifying natural habitats and habitats of qualifying species; • The structure and function (including typical species) of qualifying natural habitats; • The structure and function of the habitats of qualifying species; • The supporting processes on which qualifying natural habitats and the habitats of qualifying species rely; • The populations of qualifying species; and • The distribution of qualifying species within the site. 	<p>Biocenotic evolution, succession; Invasive non-native species; Grazing</p>

European Site	Qualifying Features	Conservation Objectives	Potential threats, pressures and activities with impacts
Fontmell and Melbury Downs SAC	<p>Annex 1 habitats (present as a qualifying feature but not a primary reason for selection of this site): Semi-natural dry grasslands and scrubland facies on calcareous substrates (Festuco-Brometalia) (* important orchid sites)</p> <p>Annex 2 species: Early gentian <i>Gentianella anglica</i></p>	<p>Ensure that the integrity of the site is maintained or restored as appropriate, and ensure that the site contributes to achieving the Favourable Conservation Status of its Qualifying Features, by maintaining or restoring;</p> <ul style="list-style-type: none"> • The extent and distribution of qualifying natural habitats and habitats of qualifying species • The structure and function (including typical species) of qualifying natural habitats • The structure and function of the habitats of qualifying species • The supporting processes on which qualifying natural habitats and habitats of qualifying species rely • The populations of qualifying species, and, • The distribution of qualifying species within the site. 	<p>Cultivation; Modification of cultivation practices; Air pollution; Biocenotic evolution, succession</p>
Holnest SAC	<p>Annex 2 species: Great crested newt <i>Triturus cristatus</i></p>	<p>Ensure that the integrity of the site is maintained or restored as appropriate, and ensure that the site contributes to achieving the Favourable Conservation Status of its Qualifying Features, by maintaining or restoring;</p>	<p>None given</p>

Habitats Regulations Assessment

Bere Regis Neighbourhood Plan Review

European Site	Qualifying Features	Conservation Objectives	Potential threats, pressures and activities with impacts
		<ul style="list-style-type: none"> • The extent and distribution of the habitats of qualifying species • The structure and function of the habitats of qualifying species • The supporting processes on which the habitats of qualifying species rely • The populations of qualifying species, and, • The distribution of qualifying species within the site. 	
<p>Isle of Portland to Studland Cliffs SAC</p>	<p>Annex 1 habitats: Vegetated sea cliffs of the Atlantic and Baltic Coasts; Semi-natural dry grasslands and scrubland facies on calcareous substrates (<i>Festuco-Brometalia</i>) Annex 1 habitats (present as a qualifying feature but not a primary reason for selection of this site): Annual vegetation of drift lines Annex 2 species: Early gentian <i>Gentianella anglica</i>.</p>	<p>Ensure that the integrity of the site is maintained or restored as appropriate, and ensure that the site contributes to achieving the Favourable Conservation Status of its Qualifying Features, by maintaining or restoring;</p> <ul style="list-style-type: none"> • The extent and distribution of qualifying natural habitats and habitats of qualifying species • The structure and function (including typical species) of qualifying natural habitats • The structure and function of the habitats of qualifying species 	<p>Cultivation; Undergrazing; Invasive non-native species; Outdoor sports and leisure activities, recreational activities; Bionetic evolution, succession</p>

Habitats Regulations Assessment

Bere Regis Neighbourhood Plan Review

European Site	Qualifying Features	Conservation Objectives	Potential threats, pressures and activities with impacts
		<ul style="list-style-type: none"> • The supporting processes on which qualifying natural habitats and the habitats of qualifying species rely • The populations of qualifying species • The distribution of qualifying species within the site. 	
<p>Poole Harbour Ramsar</p>	<p>Ramsar criterion 1: The site is the best and largest example of a bar-built estuary with lagoonal characteristics (a natural harbour) in Britain.</p> <p>Ramsar criterion 2: The site supports two species of nationally rare plant and one nationally rare alga. There are at least three British Red data book invertebrate species.</p> <p>Ramsar criterion 3: The site includes examples of natural habitat types of community interest - Mediterranean and thermos Atlantic halophilous scrubs, in this case dominated by Suaeda vera, as well as calcareous fens with <i>Cladium mariscus</i>. Transitions from saltmarsh through to peatland mires are of exceptional conservation importance as few such examples remain in Britain. The site supports nationally important populations of breeding waterfowl including Common tern <i>Sterna hirundo</i> and Mediterranean gull <i>Larus melanocephalus</i>. Over winter the site</p>	<p>Natural England considers the Conservation Advice packages for the overlapping European Sites to be sufficient to support the management of the Ramsar interests at this site.</p>	<p>Eutrophication; Introduction/invasion of non-native animal species</p>

Habitats Regulations Assessment

Bere Regis Neighbourhood Plan Review

European Site	Qualifying Features	Conservation Objectives	Potential threats, pressures and activities with impacts
	<p>also supports a nationally important population of Avocet <i>Recurvirostra avosetta</i>.</p> <p>Ramsar criterion 5: Assemblages of international importance: Species with peak counts in winter: 24709 waterfowl (5 year peak mean 1998/99-2002/2003)</p> <p>Ramsar criterion 6 – species/populations occurring at levels of international importance. Qualifying Species/populations (as identified at designation): Species with peak counts in winter: Common shelduck <i>Tadorna tadorna</i>, NW Europe 2120 individuals, representing an average of 2.7% of the GB population (5 year peak mean 1998/9-2002/3) Black-tailed godwit , <i>Limosa limosa islandica</i>, Iceland/W Europe 1724 individuals, representing an average of 4.9% of the population (5 year peak mean 1998/9-2002/3)</p>		
Poole Harbour SPA	<p>During the breeding season: Common Tern <i>Sterna hirundo</i>; Sandwich tern <i>Sterna sandvicensis</i>; Mediterranean Gull <i>Larus melanocephalus</i>; On passage: Aquatic Warbler <i>Acrocephalus paludicola</i>; Little Egret <i>Egretta garzetta</i> Over winter:</p>	<p>The objectives are to ensure that, subject to natural change, the integrity of the site is maintained or restored as appropriate, and that the site contributes to achieving the aims of the Wild Birds Directive, by maintaining or restoring:</p> <ul style="list-style-type: none"> • the extent and distribution of the habitats of the qualifying features • the structure and function of the habitats of the qualifying features 	<p>Water Pollution; Air Pollution: impact of atmospheric nitrogen deposition; Fisheries: Commercial marine and estuarine; Coastal squeeze;</p>

Habitats Regulations Assessment

Bere Regis Neighbourhood Plan Review

European Site	Qualifying Features	Conservation Objectives	Potential threats, pressures and activities with impacts
	<p>Avocet <i>Recurvirostra avosetta</i>; Little Egret <i>Egretta garzetta</i>, Eurasian spoonbill <i>Platalea leucorodia</i> Migratory species: Over winter: Black-tailed Godwit <i>Limosa limosa islandica</i>; Shelduck <i>Tadorna tadorna</i>; Assemblage qualification: A wetland of international importance. The area qualifies under Article 4.2 of the Directive (79/409/EEC) by regularly supporting at least 20,000 waterfowl</p>	<ul style="list-style-type: none"> the supporting processes on which the habitats of the qualifying features rely the populations of each of the qualifying features the distribution of qualifying features within the site 	<p>Public Access/Disturbance; Deer</p>
<p>Rooksmoor SAC</p>	<p>Annex 1 habitats (present as a qualifying feature but not a primary reason for selection of this site): Molinia meadows on calcareous, peaty or clayey-silt-laden soils (<i>Molinion caeruleae</i>) Annex 2 species: Marsh fritillary butterfly <i>Euphydryas (Eurodryas, Hypodryas) aurinia</i></p>	<p>Ensure that the integrity of the site is maintained or restored as appropriate, and ensure that the site contributes to achieving the Favourable Conservation Status of its Qualifying Features, by maintaining or restoring;</p> <ul style="list-style-type: none"> The extent and distribution of qualifying natural habitats and habitats of qualifying species The structure and function (including typical species) of qualifying natural habitats The structure and function of the habitats of qualifying species 	<p>Mowing / cutting of grassland; Grazing; Air pollution; Biocenotic evolution, succession</p>

Habitats Regulations Assessment

Bere Regis Neighbourhood Plan Review

European Site	Qualifying Features	Conservation Objectives	Potential threats, pressures and activities with impacts
		<ul style="list-style-type: none"> • The supporting processes on which qualifying natural habitats and the habitats of qualifying species rely • The populations of qualifying species, and, • The distribution of qualifying species within the site. 	
Solent and Dorset Coast SPA	Sandwich tern <i>Sterna sandvicensis</i> (Breeding); Common tern <i>Sterna hirundo</i> (Breeding); and Little tern <i>Sternula albifrons</i> (Breeding)	<p>Ensure that the integrity of the site is maintained or restored as appropriate, and ensure that the site contributes to achieving the aims of the Wild Birds Directive, by maintaining or restoring;</p> <ul style="list-style-type: none"> • The extent and distribution of the habitats of the qualifying features • The structure and function of the habitats of the qualifying features • The supporting processes on which the habitats of the qualifying features rely • The population of each of the qualifying features, and, • The distribution of the qualifying features within the site. 	Water pollution; disturbance; Outdoor sports and leisure activities, recreational activities;
St Albans Head to Durlston Head SAC	Annex 1 habitats: Vegetated sea cliffs of the Atlantic and Baltic Coasts;	Ensure that the integrity of the site is maintained or restored as appropriate, and ensure that the site contributes to achieving the Favourable Conservation	Biocenotic evolution, succession; Grazing;

European Site	Qualifying Features	Conservation Objectives	Potential threats, pressures and activities with impacts
	<p>Semi-natural dry grasslands and scrubland facies on calcareous substrates (Festuco-Brometalia) (*important orchid site)</p> <p>Annex 2 species: Early gentian <i>Gentianella anglica</i></p> <p>Annex 2 species (present as a qualifying feature but not a primary reason for selection of this site): Greater horseshoe bat <i>Rhinolophus ferrumequinum</i></p>	<p>Status of its Qualifying Features, by maintaining or restoring;</p> <ul style="list-style-type: none"> • The extent and distribution of qualifying natural habitats and habitats of qualifying species • The structure and function (including typical species) of qualifying natural habitats • The structure and function of the habitats of qualifying species • The supporting processes on which qualifying natural habitats and the habitats of qualifying species rely • The populations of qualifying species, and, • The distribution of qualifying species within the site. 	<p>Cultivation; Invasive non-native species; Outdoor sports and leisure activities, recreational activities.</p>
Studland to Portland SAC	<p>Annex 1 habitats: Reefs</p>	<p>Ensure that the integrity of the site is maintained or restored as appropriate, and ensure that the site contributes to achieving the Favourable Conservation Status of its Qualifying Features, by maintaining or restoring;</p> <ul style="list-style-type: none"> • The extent and distribution of qualifying natural habitats; 	<p>Other human intrusions and disturbances; Fishing and harvesting aquatic resources</p>

Habitats Regulations Assessment

Bere Regis Neighbourhood Plan Review

European Site	Qualifying Features	Conservation Objectives	Potential threats, pressures and activities with impacts
		<ul style="list-style-type: none">• The structure and function (including typical species) of qualifying natural habitats; and• The supporting processes on which the qualifying natural habitats rely	